



**HYDRAULIC
BREAKERS**

| TKB - 52 |

| TKB - 72 |

| TKB52-S |

| TKB72-S |

| TKB102-S |

| TKB302-S |

| TKB402-S |

| TKB802-S |

**SOUND
SUPPRESSED
HYDRAULIC
BREAKERS**

TAKEUCHI
Japanese for Reliability

Sound Suppressed Hydraulic Breakers

Takeuchi's new sound suppressed hydraulic breakers are designed to meet the requirement for quieter operating environments. The new range offers significantly quieter breaker performance across the range.

The 6 models in the range offer excellent power to weight ratios suitable for a variety of breaker applications and Takeuchi tool carriers.

Built for the toughest construction conditions the new Takeuchi breakers offer a fully enclosed stylish body casing. Designed to offer both heavy duty protection on site, sealing against dust and debris, the casing also fully encloses the sound emissions to help minimize dBA sound levels.



SOUND & VIBRATION INSULATION

The range combines 3 parts into a one-piece arrangement - the box type outer housing offers enormous noise and vibration insulation.

FEWER COMPONENTS

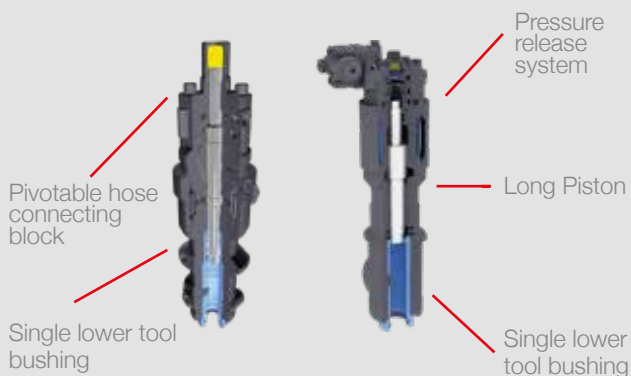
The breaker body consists of far fewer integral component parts and no tie rods, an integrated accumulator and single lower tool bushing. A simplified breaker process makes for fewer component problems helping improve durability and serviceability.

EASY INSTALLATION

The larger breaker models have an easy attach pivoting connecting block for hoses - provides for varying positions of auxiliary ports of a carrier.



ADVANCED TECHNOLOGY



POWERFUL RELIABLE AND EASY TO MAINTAIN

The design improves breaker performance by maintaining alignment for the tool. Just two moving parts minimizes maintenance issues.

Takeuchi sound suppressed breakers have a solid all round cast steel protective body eliminating exposed areas compared to conventional breakers where the tie rods are vulnerable when positioned around the edges.

The far heavier piston design provides the strength for increased blow frequency and breakout performance. Increased breaker oil flow capacity of up to 45% makes for a more versatile range of tool carriers. No need for periodic gas recharging.



Slim-Line Hydraulic Breakers

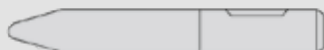
MAXIMUM ACCESS AND VISIBILITY

Designed for narrow trench work, the TKB-52 and TKB-72 offer operators enhanced visibility directly into the trench. This is vital for sensitive utilities work.

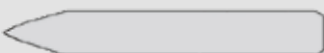
The well-protected breaker body has a compact width, getting access into the narrow trenches frequently used for utilities excavations.

CHISEL TYPES

Moil point



Chisel



TKB-52
160mm width



TKB-72
185mm width



Specifications

Model	TKB-52	TKB52-S	TKB-72	TKB72-S	TKB102-S	TKB302-S	TKB402-S	TKB802-S
Breaker body weight (kg)	53	74	81	112	156	228	315	415
Working weight (kg) (incl. mounting bracket and std. tool)	70	90	105	135	180	275	385	505
Body length / total length (mm)	574 / 781	677 / 884	658 / 880	767 / 994	869 / 1129	911 / 1261	1032 / 1449	1217 / 1669
Body width (mm)	160	210	185	280	-	-	-	-
Operating pressure bar (*c)	100 - 120	100 - 120	120 - 140	120 - 140	120 - 140 bar	90 - 140 bar	90 - 140 bar	100 - 140 bar
Oil flow range (l/min)	15 - 33	15 - 33	20 - 48	20 - 48	30 - 63	35 - 90	40 - 120	50 - 150
Hose diameter (mm)	12	12	12	12	15	19	19	26
Tool diameter (mm)	36	36	42	42	50	72	80	90
Impact rate (bpm) (*b)	1300 - 2500	1300 - 2500	1600 - 2600	1600 - 2600	1000 - 2000	600 - 1800	500 - 1700	500 - 1700
Noise level, guaranteed sound power level, (LWA) EU directive 2000/14/EC	121 dB	119 dB	123 dB	123 dB	124 dB	122 dB	124 dB	127 dB
Carrier weight tonnes	0.8 - 1.8 t	0.8 - 1.8 t	1.3 - 2.7 t	1.3 - 2.7 t	2.0 - 4.0 t	3.4 - 8.0 t	4.6 - 9.0 t	7.0 - 12.5t

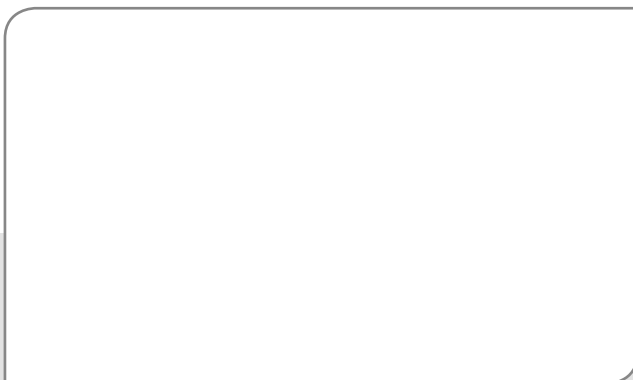
(* & c*- dependent on oil flow, oil viscosity, temperature and material to be broken)

Breaker Model	TKB-52	TKB52-S	TKB-72	TKB72-S	TKB102-S	TKB302-S	TKB402-S	TKB802-S
Compatible Machine	70kg	90kg	105kg	135kg	180kg	275kg	385kg	505kg
TB210R	●							
TB215R		●						
TB216		□	●	●				
TB219			●	●				
TB225			□	□	●			
TB23R			□	□	●			
TB230					●			
TB235					●			
TB138FR					●			
TB240					□	●		
TB250						●		
TB153FR						●		
TB260						●		
TB280FR						□	●	
TB290							●	
TB295W							□	●
TB2150R								□
TB2150								□

(●= Recommended, □= Suitable for limited usage)

For more information locally

call us direct, or contact:



1/2019

Takeuchi breakers come with a 1 year warranty as standard, this does not cover wear parts and maintenance items.

In accordance with our established policy of constant improvement, we reserve the right to amend these specifications at any time without notice. Photographs shown may feature non-standard equipment.

Takeuchi Mfg (UK) Ltd, Unit E2B Kingsway Business Park,
John Boyd Dunlop Drive, Rochdale, Lancashire OL16 4NG
Tel: 01706 657 722 Fax: 01706 657 744

Southern Depot at 20 Colthrop Business Park
Colthrop Lane, Thatcham, Newbury, Berks RG19 4NB
Tel: 01635 877 196 Fax: 01635 877 195

www.takeuchi-mfg.co.uk Email: sales@takeuchi-mfg.co.uk

TAKEUCHI
Japanese for Reliability