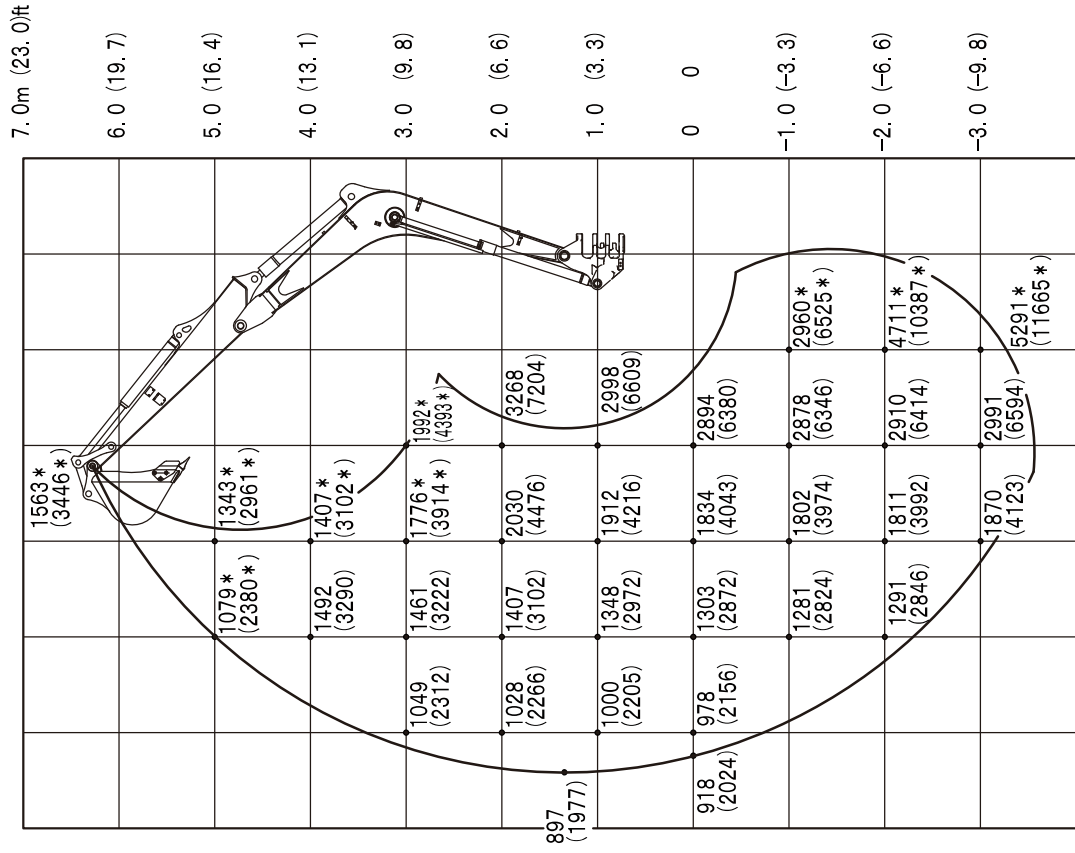




SPECIFICATIONS  
LIFTING CAPACITIES

Long arm <Applicable machine models 185100001 or later>

Over Front ; Dozer Blade Up



7.0m (23.0ft) 0  
6.0 (19.7) 1.0 (3.3)  
5.0 (16.4) 2.0 (6.6)  
4.0 (13.1) 3.0 (9.8)  
3.0 (9.8) 4.0 (13.1)  
2.0 (6.6) 5.0 (16.4)  
1.0 (3.3) 6.0 (19.7)  
0 7.0m (23.0ft)  
-1.0 (-3.3)  
-2.0 (-6.6)  
-3.0 (-9.8)

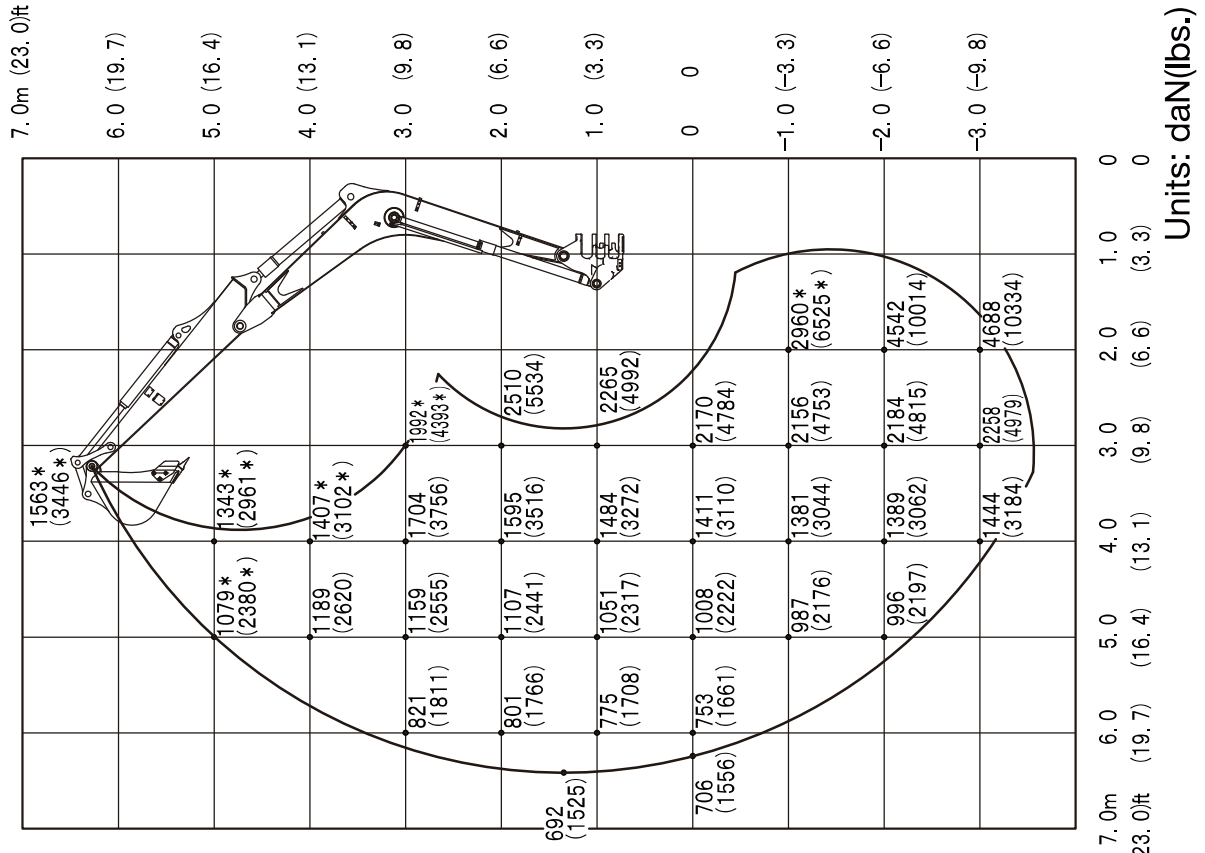
Units: daN(lbs.)



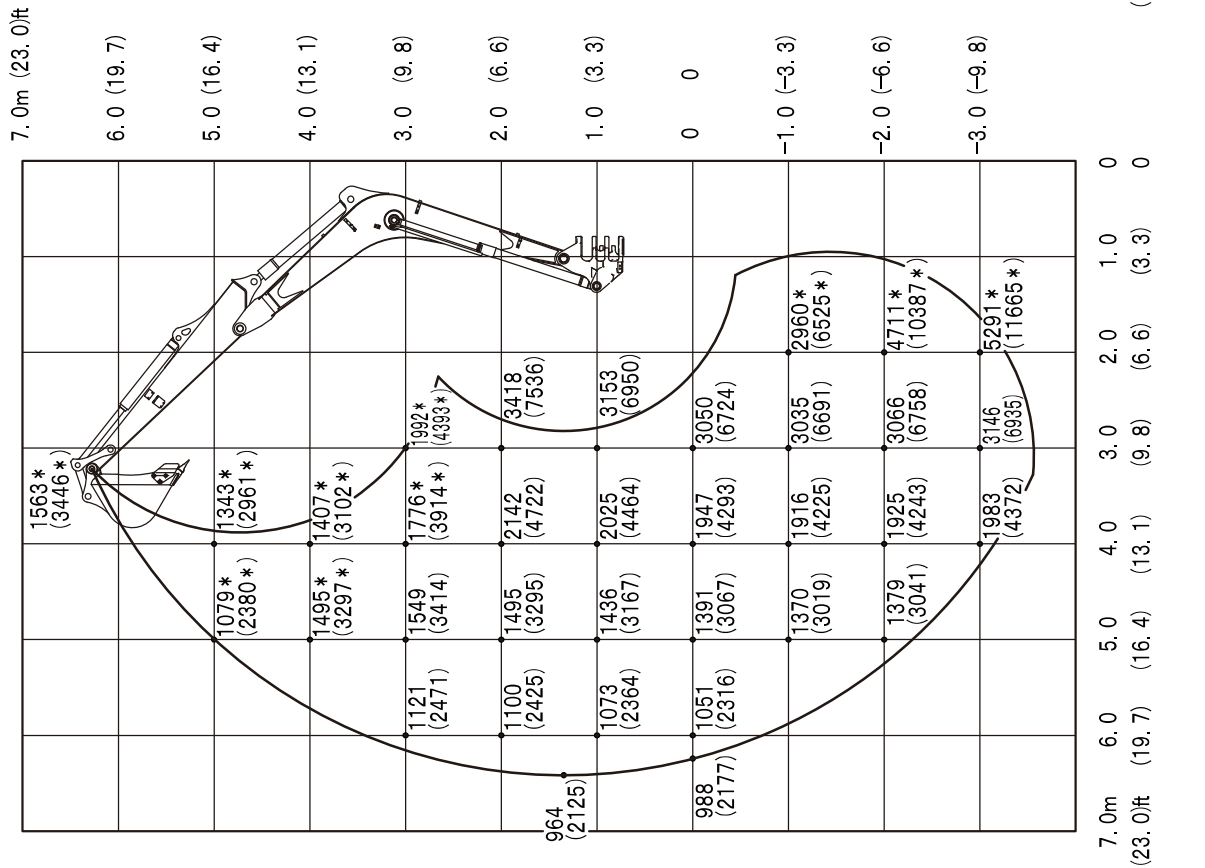
SPECIFICATIONS  
LIFTING CAPACITIES

Long arm <Applicable machine models 185100001 or later>

Over Side



Over Rear



Units: daN(lbs.)